

ILS or LOC RWY 30R

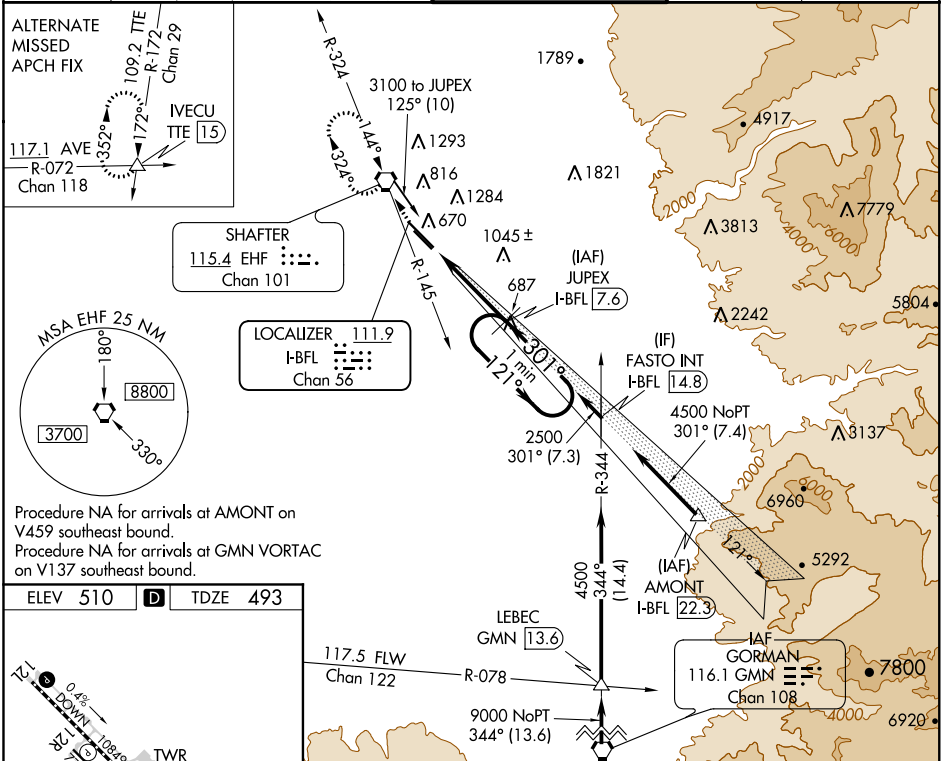
MEADOWS FIELD (BFL)

LOC/DME I-BFL 111.9 Chan 56	APP CRS 301°	Rwy Idg TDZE Apt Elev	7429 493 510
--	------------------------	-----------------------------	---

⚠ Circling NA northeast of Rwy 12L-30R. DME Required. VDP NA with Porterville altimeter setting. When local altimeter setting not received, use Porterville altimeter setting: increase DA to 790 and all visibilities to RVR 2200; increase all MDA 100 feet and visibility Cats C and D to RVR 6000. For inop ALS, increase S-LOC 30R Cat A and B visibility to RVR 5000. For inop ALS when using Porterville altimeter setting, increase S-ILS 30R all Cats visibility to RVR 5000.

MALSR
MISSED APPROACH: Climb to 1000 then climbing right turn to 3000 on EHF VORTAC R-145 direct EHF VORTAC and hold, continue climb-in-hold to 3000.

ATIS 118.6	BAKERSFIELD APP CON* 118.8 284.625 118.9 270.3 (SOUTH) (NORTH)	BAKERSFIELD TOWER* 118.1 (CTAF) 257.8	GND CON 121.7	UNICOM 122.95
----------------------	---	---	-------------------------	-------------------------



Procedure NA for arrivals at AMONT on V459 southeast bound.
Procedure NA for arrivals at GMN VORTAC on V137 southeast bound.

ELEV 510	D	TDZE 493
----------	----------	----------



TDZ/CL Rwy 30R	HIRL Rwy 12L-30R	MIRL Rwy 12R-30L
----------------	------------------	------------------

1000	3000	EHF	Use I-BFL DME when on the localizer course.	JUPEX I-BFL 7.6	One Minute Holding Pattern
↑	EHF R-145	⬡			
*LOC only	I-BFL 1.4	*I-BFL 2.6		2500	2500
	1.2 NM	5 NM			GS 3.00° TCH 51

CATEGORY	A	B	C	D
S-ILS 30R		698/18	205 (200-1/2)	
S-LOC 30R	940/24	447 (500-1/2)	940/45	447 (500-7/8)
C CIRCLING	960-1	450 (500-1)	960-1 1/2	1060-2 550 (600-2)

SW-3, 28 MAR 2019 to 25 APR 2019

SW-3, 28 MAR 2019 to 25 APR 2019