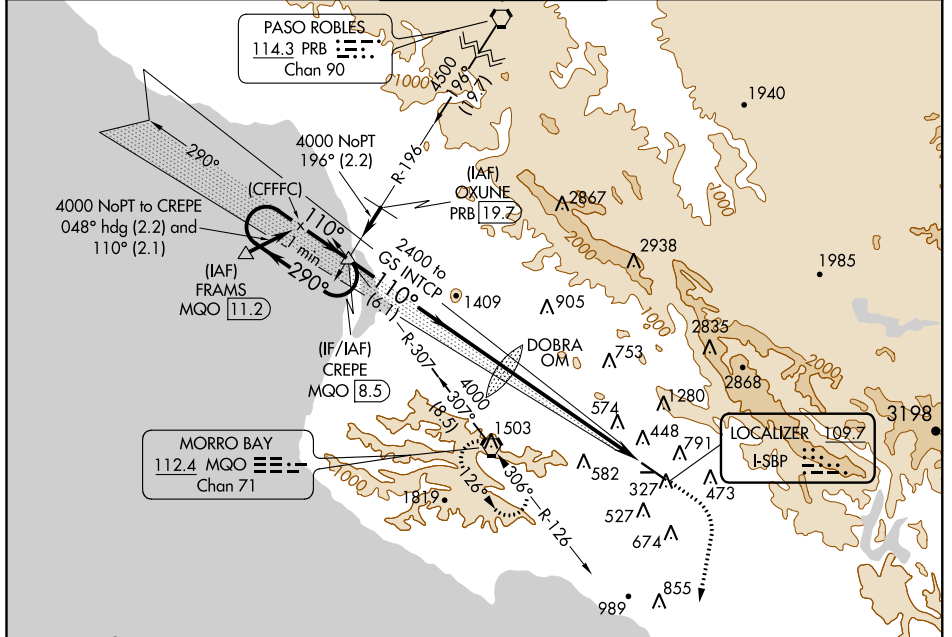


LOC I-SBP 109.7	APP CRS 110°	Rwy Idg 5300 TDZE 198 Apt Elev 212
---------------------------	------------------------	---

ILS RWY 11
SAN LUIS COUNTY RGNL (SBP)

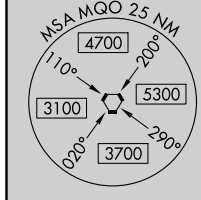
	MALS R	MISSED APPROACH: Climb to 900 then climbing right turn to 3300 on heading 175° and on MQO VORTAC R-126 to MQO VORTAC and hold, continue climb-in-hold to 3300.
--	--------	--

ATIS 120.6	SANTA BARBARA APP CON* 127.725 244.575	SAN LUIS TOWER* 124.0 (CTAF) 379.9	GND CON 121.6	UNICOM 122.95
----------------------	--	--	-------------------------	-------------------------

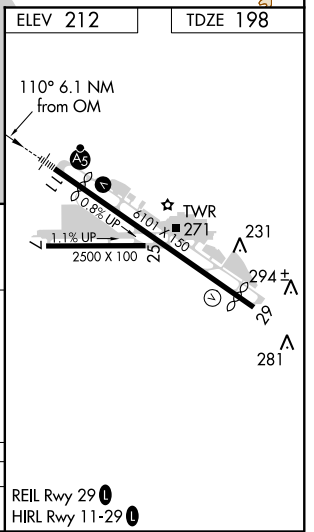
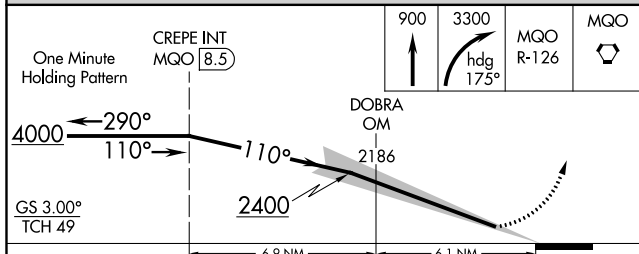


SW-3, 28 MAR 2019 to 25 APR 2019

SW-3, 28 MAR 2019 to 25 APR 2019



When GS not used, use LOC RWY 11 procedure.



CATEGORY	A	B	C	D
S-ILS 11		398-1/2	200 (200-1/2)	