


LOC/DME I-SMX	APP CRS	Rwy Idg	8004
108.9	120°	TDZE	230
Chan 26		Apt Elev	261

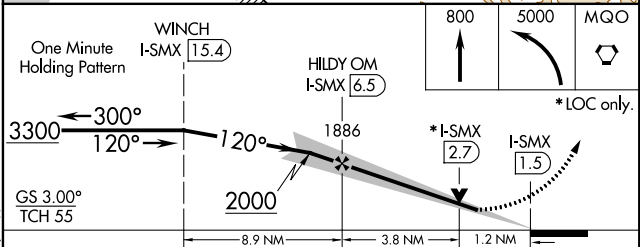
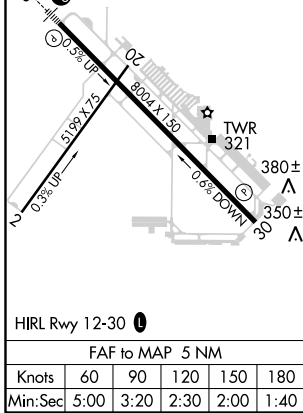
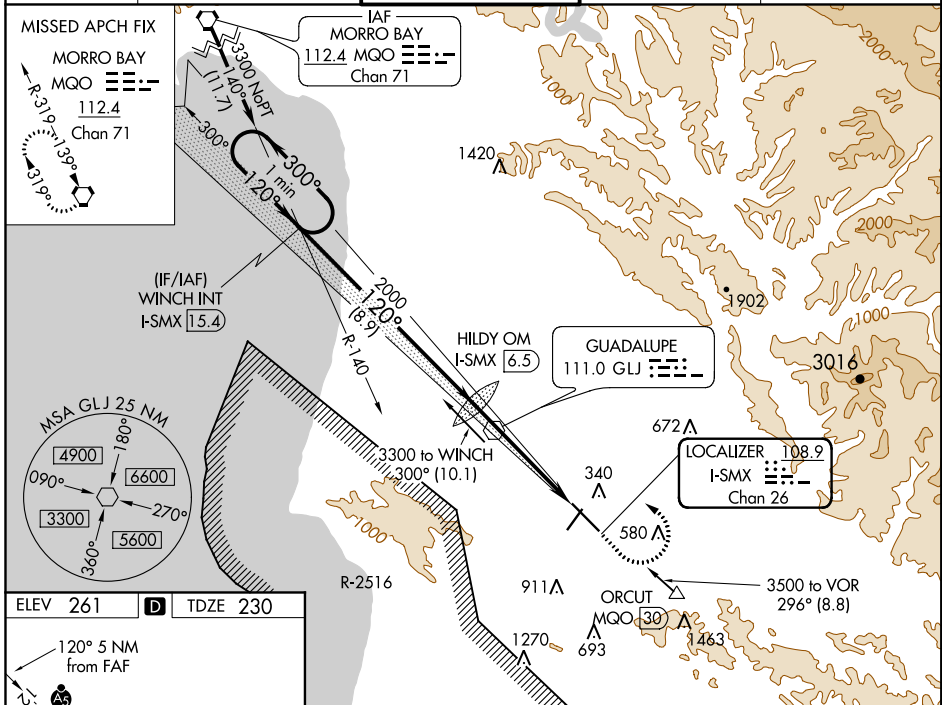
ILS or LOC RWY 12

SANTA MARIA PUBLIC/CAPTAIN G ALLAN HANCOCK FIELD (SMX)

⚠ Night Landing: Rwy 2 NA. VDP NA with Vandenberg altimeter setting.
⚠ When local altimeter setting not received, use Vandenberg altimeter setting and increase all DA 43 feet, and all MDA 60 feet, increase S-LOC 12 Cat C/D visibility to RVR 5500 and Circling Cat C visibility to 1¾. For inop MALS, increase S-LOC 12 Cat C/D visibility to 1¾ mile.
 # RVR 1800 authorized with the use of FD or AP or HUD to DA.

MALS  MISSED APPROACH: Climb to 800, then climbing left turn to 5000 direct MQO VORTAC and hold.

ATIS 121.15	SANTA BARBARA APP CON* 124.15 327.8	SANTA MARIA TOWER* 118.3 (CTAF) 239.25	GND CON 121.9	UNICOM 122.95
-----------------------	-----------------------------------------------	--------------------------------------------------	-------------------------	-------------------------



CATEGORY	A	B	C	D
S-ILS 12#	430/24 200 (200-½)			
S-LOC 12	680/24 450 (500-½)		680/50 450 (500-1)	
CIRCLING	860-1 599 (600-1)		860-1½ 1320-3 599 (600-1½) 1059 (1100-3)	

ILS or LOC RWY 12

SW-3, 28 MAR 2019 to 25 APR 2019

SW-3, 28 MAR 2019 to 25 APR 2019