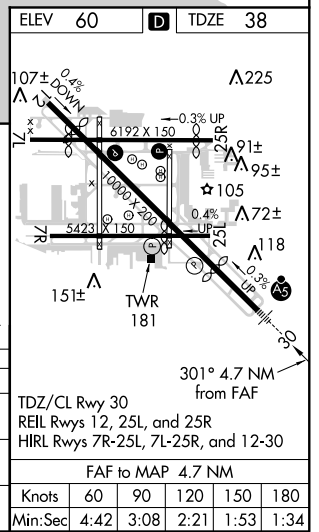
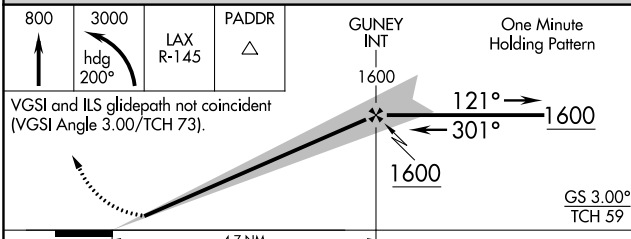
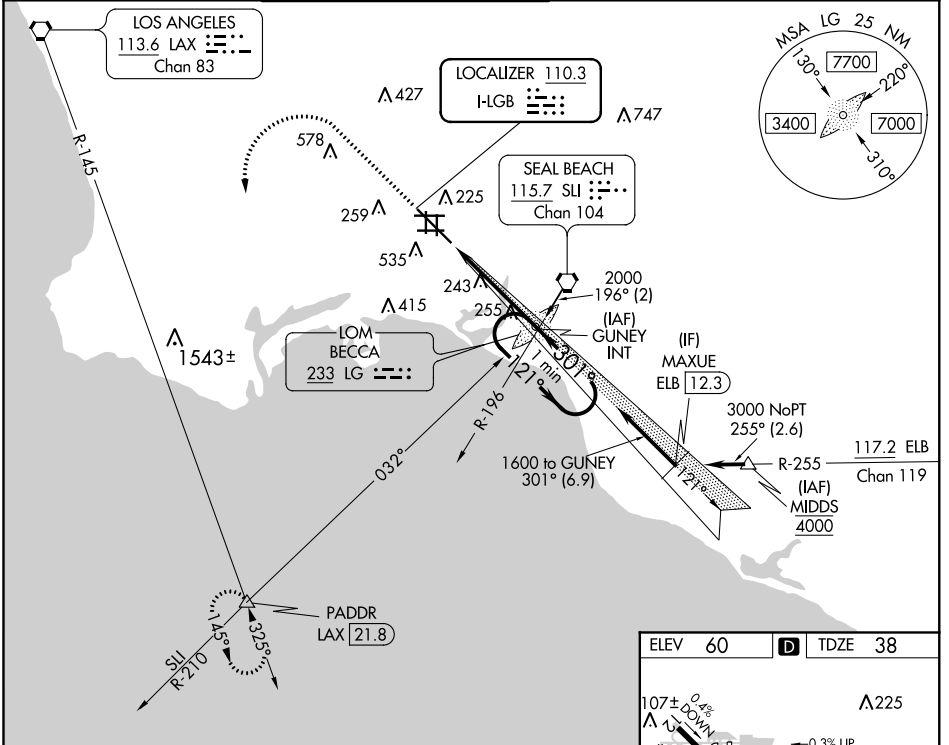


LOC I-LGB <b>110.3</b>	APP CRS <b>301°</b>	Rwy Idg TDZE Apt Elev	<b>7415</b> <b>38</b> <b>60</b>
---------------------------	------------------------	-----------------------------	---------------------------------------

# ILS or LOC RWY 30

LONG BEACH/DAUGHERTY FIELD (LGB)

	MISSED APPROACH: Climb to 800 then climbing left turn to 3000 on heading 200° and on LAX VORTAC R-145 to PADDR INT/LAX 21.8 DME and hold.				
ATIS <b>127.75</b>	SOCAL APP CON <b>125.35 316.125</b>	LONG BEACH TOWER ★ <b>120.5 257.6</b> (Rwy 12) <b>119.4</b> (CTAF) <b>257.6</b> (Rwy 30)	GND CON <b>133.0 257.6</b>	CLNC DEL <b>118.15</b>	UNICOM <b>122.95</b>



CATEGORY	A	B	C	D
S-ILS 30	258/18		220 (200-½)	
S-LOC 30	520/24	482 (500-½)	520/50	482 (500-1)
<b>C</b> CIRCLING	880-1 820 (900-1)	880-1¼ 820 (900-1¼)	880-2½ 820 (900-2½)	880-2¾ 820 (900-2¾)

SW-3, 22 JUN 2017 to 20 JUL 2017

SW-3, 22 JUN 2017 to 20 JUL 2017