

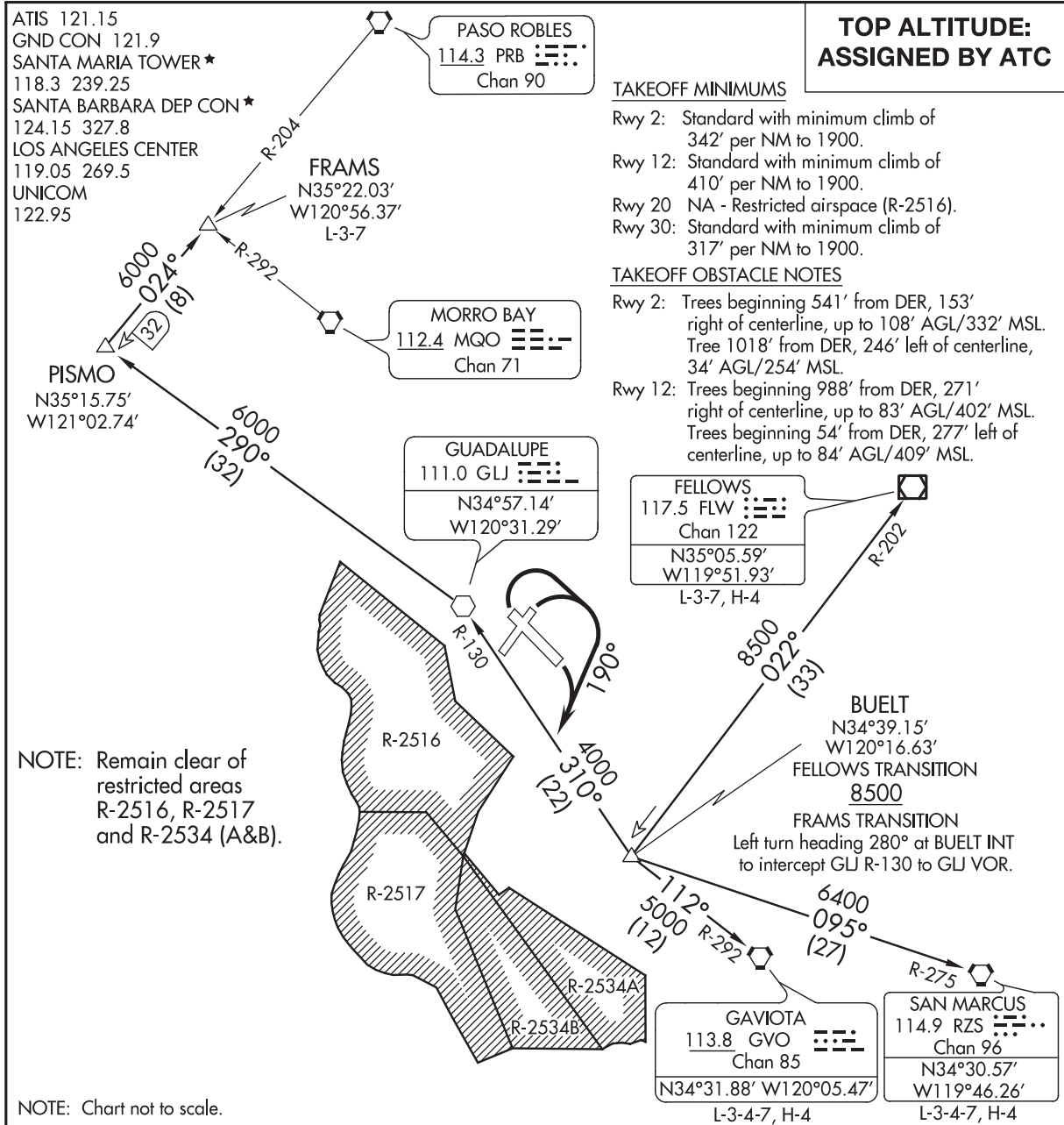
(BUELT4.BUFLT) 16315

SANTA MARIA PUBLIC/CAPTAIN G ALLAN HANCOCK FIELD (SMX)

BUFLT FOUR DEPARTURE

SL-379 (FAA)

SANTA MARIA, CALIFORNIA



SW-3, 02 MAR 2017 to 27 APR 2017

SW-3, 02 MAR 2017 to 27 APR 2017

DEPARTURE ROUTE DESCRIPTION

TAKEOFF RUNWAY 2, 12, 30: Climbing right turn heading 190° to intercept GLJ R-130 to BUFLT.

FELLOWS TRANSITION (BUFLT4.FLW): From over BUFLT INT on FLW R-202 to FLW VOR/DME.

FRAMS TRANSITION (BUFLT4.FRAMS): Left turn heading 280° at BUFLT INT to intercept GLJ R-130 to GLJ VOR, then on GLJ R-290 to PISMO INT, then on PRB R-204 to FRAMS INT.

GAVIOTA TRANSITION (BUFLT4.GVO): From over BUFLT INT on GVO R-292 to GVO VORTAC.

SAN MARCUS TRANSITION (BUFLT4.RZS): From over BUFLT INT on RZS R-275 to RZS VORTAC.

BUFLT FOUR DEPARTURE

(BUFLT4.BUFLT) 10NOV16

SANTA MARIA, CALIFORNIA

SANTA MARIA PUBLIC/CAPTAIN G ALLAN HANCOCK FIELD (SMX)