


ILS Y RWY 16R

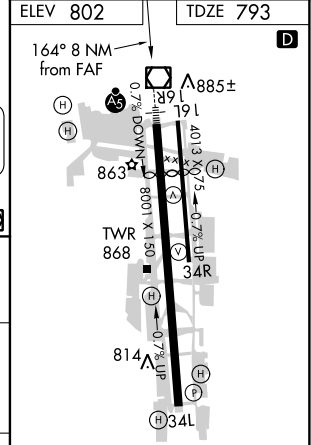
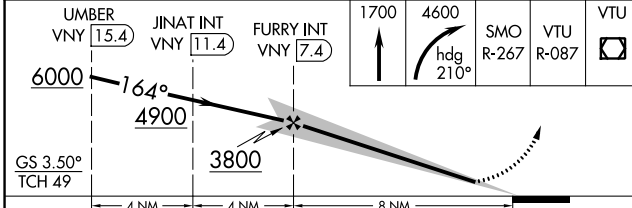
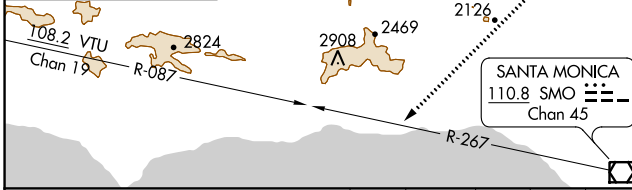
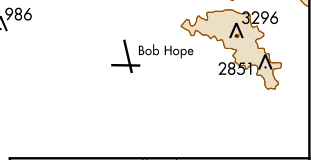
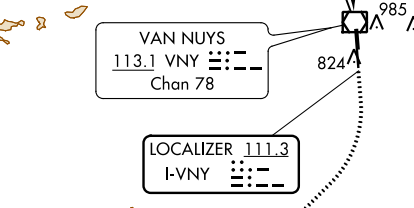
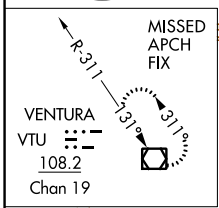
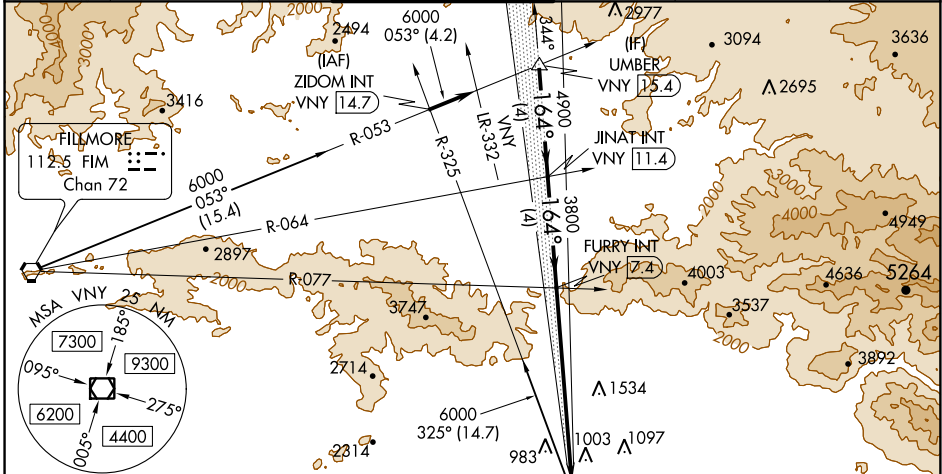
VAN NUYS (VNY)

LOC I-VNY	APP CRS	Rwy ldg	6569
111.3	164°	TDZE	793
		Apt Elev	802

▼ For inop MALS, increase S-ILS all Cats visibility to 2 SM. When local altimeter setting not received, use Burbank altimeter setting and increase DA to 1480 feet and all Cats visibility to 1½ SM. Autopilot coupled approach NA below 1900.

MALS  MISSED APPROACH: Climb to 1700 then climbing right turn to 4600 on heading 210° and on SMO VOR/DME R-267 and on VTU VOR/DME R-087 to VTU R/DME and hold.

ATIS	SOCAL APP CON	VAN NUYS TOWER ★	GND CON	CLNC DEL	UNICOM
127.55	120.4 360.6 (NORTH) 134.2 338.2 (WEST)	119.3 (CTAF) 239.0	121.7	126.6 239.0	122.95



CATEGORY	A	B	C	D
S-ILS 16R		1461-1½	668 (700-1½)	

HIRL Rwy 16R-34L **①**
MIRL Rwy 16L-34R

SW-3, 22 JUN 2017 to 20 JUL 2017

SW-3, 22 JUN 2017 to 20 JUL 2017