

# ILS Z RWY 16R

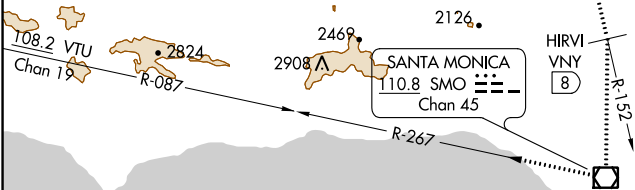
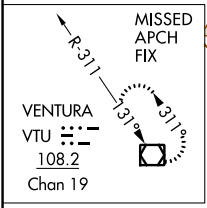
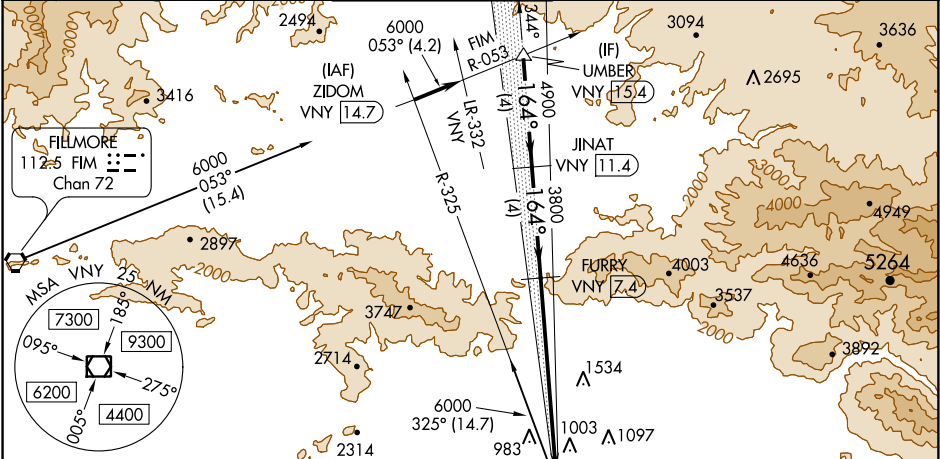
VAN NUYS (VNY)

LOC I-VNY <b>111.3</b>	APP CRS <b>164°</b>	Rwy Idg <b>6569</b>
		TDZE <b>793</b>
		Apt Elev <b>802</b>

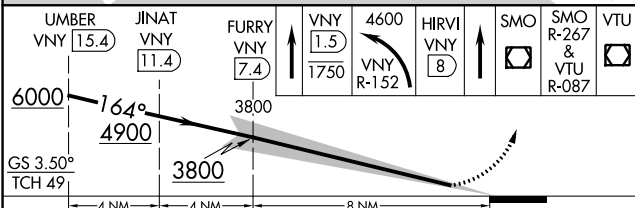
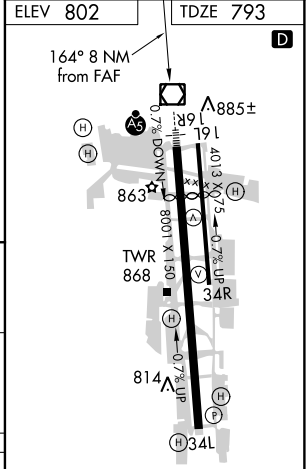
**DME required.** RADAR required for monitoring of missed approach. When local altimeter setting not received, use Burbank altimeter setting and increase DA to 1114. Rwy 16R helicopter visibility reduction below RVR 4000 NA. For inop ALS, increase S-ILS 16R all Cats visibility to RVR 5000.

**MISSED APPROACH:** Climb to cross VNY 1.5 DME south of VNY VOR/DME at or below 1750 then climbing left turn to 4600 on VNY VOR/DME R-152 to HIRVI/VNY VOR/DME 8 DME, direct SMO VOR/DME then on SMO VOR/DME R-267 then on VTU VOR/DME R-087 to VTU VOR/DME and hold.

ATIS <b>127.55</b>	SOCAL APP CON <b>120.4 360.6 (NORTH)</b> <b>134.2 338.2 (WEST)</b>	VAN NUYS TOWER ★ <b>119.3 (CTAF) 0 239.0</b>	GND CON <b>121.7</b>	CLNC DEL <b>126.6 239.0</b>	UNICOM <b>122.95</b>
-----------------------	--	---	-------------------------	--------------------------------	-------------------------



A descent to at or below 1750 may be required when executing an early missed approach.



CATEGORY	A	B	C	D
S-ILS 16R		1095/40	302 (300-¾)	

HIRL Rwy 16R-34L  
MIRL Rwy 16L-34R

SW-3, 22 JUN 2017 to 20 JUL 2017

SW-3, 22 JUN 2017 to 20 JUL 2017