

(LYNXX.LYNXX8) 03AUG06

LYNXX EIGHT ARRIVAL

SOCAL APP CON
120.4 360.6
BOB HOPE D-ATIS
134.5
135.125
VAN NUYS ATIS
127.55

LAKE HUGHES
108.4 LHS
Chan 21
N34°40.98'-W118°34.62'
L-3-4-7

JANNY
N34°33.97'-W118°21.37'
TURBOJET VERTICAL NAVIGATION
PLANNING INFORMATION
Expect clearance to cross at 8000'

WOOLI
N34°39.61'-W117°51.89'
TURBOJET VERTICAL NAVIGATION
PLANNING INFORMATION
Expect clearance to cross at 14,000'

DAGGETT
113.2 DAG
Chan 79
N34°57.75'-W116°34.69'
L-7, H-4

BASAL
N34°45.47'
W116°51.71'

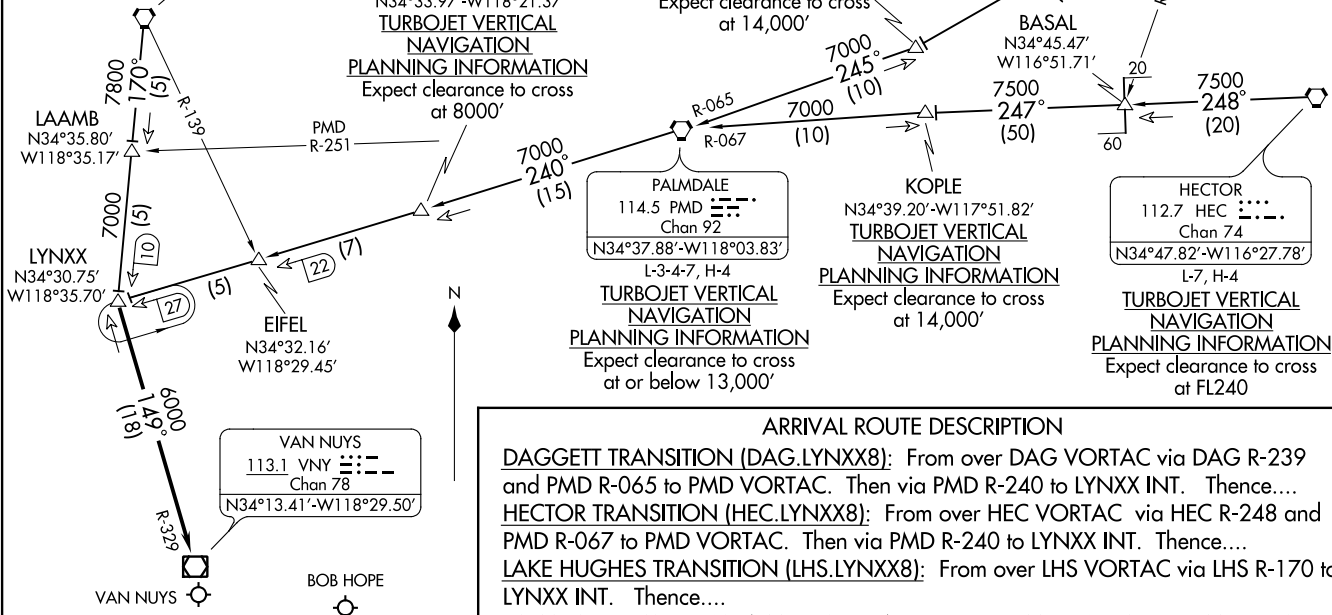
PALMDALE
114.5 PMD
Chan 92
N34°37.88'-W118°03.83'
L-3-4-7, H-4

TURBOJET VERTICAL NAVIGATION
PLANNING INFORMATION
Expect clearance to cross at or below 13,000'

KOPE
N34°39.20'-W117°51.82'
TURBOJET VERTICAL NAVIGATION
PLANNING INFORMATION
Expect clearance to cross at 14,000'

HECTOR
112.7 HEC
Chan 74
N34°47.82'-W116°27.78'
L-7, H-4

TURBOJET VERTICAL NAVIGATION
PLANNING INFORMATION
Expect clearance to cross at FL240



ARRIVAL ROUTE DESCRIPTION

DAGGETT TRANSITION (DAG.LYNXX8): From over DAG VORTAC via DAG R-239 and PMD R-065 to PMD VORTAC. Then via PMD R-240 to LYNXX INT. Thence....

HECTOR TRANSITION (HEC.LYNXX8): From over HEC VORTAC via HEC R-248 and PMD R-067 to PMD VORTAC. Then via PMD R-240 to LYNXX INT. Thence....

LAKE HUGHES TRANSITION (LHS.LYNXX8): From over LHS VORTAC via LHS R-170 to LYNXX INT. Thence....

PALMDALE TRANSITION (PMD.LYNXX8): From over PMD VORTAC via PMD R-240 to LYNXX INT. Thence....

....From over LYNXX INT via VNY R-329 to VNY VOR/DME. Expect radar vectors to final approach course after VNY VOR/DME.

NOTE: DME required for DAGGETT, HECTOR, and PALMDALE TRANSITIONS.

NOTE: Chart not to scale.

BURBANK, CALIFORNIA

(LYNXX.LYNXX8) 17117

AL-67 (FAA)

BURBANK, CALIFORNIA